

# STONY CREEK DRAINAGE IMPROVEMENTS PHASE 1

**RVE**

1901

**REMINGTON & VERNICK ENGINEERS**

Croton Road Corporate Center  
555 Croton Road, Suite 401  
King of Prussia, PA 19406  
(610) 940-1050, FAX (610) 940-1161  
WEB ADDRESS: RVE.COM

Excellence • Innovation • Service

REGISTERED PROFESSIONAL ENGINEER  
DATE: 11/24/2025  
**CHRISTOPHER J. FAZIO**  
PROFESSIONAL ENGINEER, No. PE0055339-E  
PENNSYLVANIA

ALL DOCUMENTS PREPARED BY REMINGTON & VERNICK ENGINEERS AND AFFILIATES ARE INSTRUMENTS OF SERVICE IN RESPECT OF THE PROJECT. THEY ARE NOT INTENDED OR REPRESENTED TO BE SUITABLE FOR REUSE BY OWNER OR OTHERS ON EXTENSIONS OF THE PROJECT OR ON ANY OTHER PROJECT. ANY REUSE WITHOUT WRITTEN VERIFICATION OR ADAPTATION BY REMINGTON & VERNICK ENGINEERS AND AFFILIATES FOR THE SPECIFIC PURPOSE INTENDED WILL BE AT OWNERS SOLE RISK AND WITHOUT LIABILITY OR LEGAL EXPOSURE TO REMINGTON & VERNICK ENGINEERS AND AFFILIATES. AND OWNER SHALL INDEMNIFY AND HOLD HARMLESS REMINGTON & VERNICK ENGINEERS AND AFFILIATES FROM ALL CLAIMS, DAMAGES, LOSSES AND EXPENSES ARISING OUT OF OR RESULTING THEREFROM.

NO.	ISSUED FOR BID	REVISION	DATE	BY	CHK
1			11/24/25	MW/TF	

**TITLE SHEET**

EAST NORRITON TOWNSHIP  
STONY CREEK DRAINAGE IMPROVEMENTS  
PHASE 1  
MONTGOMERY COUNTY  
PENNSYLVANIA

DRAWN BY:	DESIGN BY:	CHECKED BY:	SCALE:
MEW	PMF	CJF	AS NOTED
DATE:	12/12/2024		
JOB No.:	1	of 14	
PROJECT:	MENT040		

SHEET INDEX	
SHEET #	DESCRIPTION
1	TITLE SHEET
2	GENERAL NOTES
3	LEGEND
4	PHASING PLAN
5	EXISTING CONDITIONS & DEMOLITION PLAN
6	SITE PLAN
7	GRADING AND DRAINAGE PLAN
8	PROFILE
9	EROSION & SEDIMENT CONTROL PLAN
10	EROSION & SEDIMENT CONTROL NOTES
11	EROSION & SEDIMENT CONTROL DETAILS
12	CONSTRUCTION DETAILS - 1
13	CONSTRUCTION DETAILS - 2
14	CONSTRUCTION DETAILS - 3

LIST OF UTILITIES AND EMERGENCY CONTACT INFORMATION	
<b>PUBLIC WORKS:</b>	<b>EAST NORRITON TOWNSHIP</b> BRETT STEPHENS 2501 STANBRIDGE STREET EAST NORRITON, PA. 19401 BSTEPHENS@EASTNORRITONTWP.ORG
<b>PUBLIC WORKS:</b>	<b>WHITPAIN TOWNSHIP</b> TOM FARZETTA 960 WENTZ ROAD BLUE BELL, PA. 19422 TFARZETTA@WHITPAINTOWNSHIP.ORG
<b>WATER:</b>	<b>PENNSYLVANIA AMERICAN WATER</b> JIM CARR 171 W. JOHNSON HIGHWAY NORRISTOWN, PA. 19401 JAMES.CARR@AMWATER.COM
<b>SEWER:</b>	<b>AQUA PENNSYLVANIA</b> JAMES THORNTON 762 W. LANCASTER AVENUE BRYN MAWR, PA. 19010 JDTHORNTON@AQUAAMERICA.COM
<b>ELECTRIC:</b>	<b>PECO ENERGY C/O USIC</b> NIKKIA SIMPKINS 450 S. HENDERSON ROAD, SUITE B KING OF PRUSSIA, PA. 19406 NIKKIASIMPKINS@USICLLC.COM
<b>TELE/CABLE:</b>	<b>COMCAST</b> TOM DEMSEY 1 APOLLO ROAD PLYMOUTH MEETING, PA. 19462
<b>TELE/CABLE:</b>	<b>COMCAST</b> ROBERT HARVEY 4400 WAYNE AVENUE PHILADELPHIA, PA. 19140 BOB.HARVEY@CABLE.COMCAST.COM



**PROJECT LOCATION MAP**

SCALE: 1" = 500'

FUNDING SOURCE	
PA SMALL WATER & SEWER - DCED GRANT BY COMMONWEALTH FINANCE AUTHORITY	
COVID-19 ARPA H2O PA PROGRAM	
TOWNSHIP OF EAST NORRITON	

## EAST NORRITON TOWNSHIP MONTGOMERY COUNTY, PA

NOVEMBER 2025



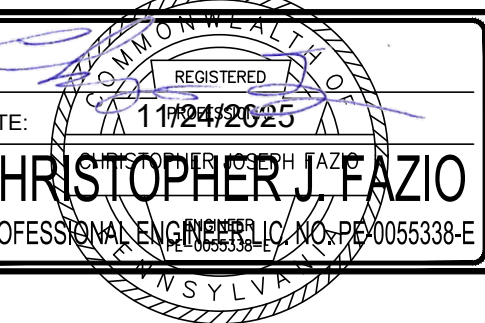
Pennsylvania Act 187 (1995) requires a working deep notice from excavators who are about to dig. These "Shovel Ready" Drains, Trench or Ditching Systems in the Commonwealth, are the responsibility of the customer to contact the Pennsylvania One-Call System at 1-800-242-1776.

# STANDARD LEGEND

NOTE: ALL SYMBOLS MAY NOT BE USED



**REMINGTON & VERNICK ENGINEERS**  
 Croton Road Corporate Center  
 555 Croton Road, Suite 401  
 King of Prussia, PA 19406  
 (610) 940-1050, FAX (610) 940-1161  
 WEB ADDRESS : RVE.COM  
 Excellence • Innovation • Service



ALL DOCUMENTS PREPARED BY REMINGTON & VERNICK ENGINEERS AND AFFILIATES ARE INSTRUMENTS OF SERVICE IN RESPECT OF THE PROJECT. THEY ARE NOT INTENDED OR REPRESENTED TO BE SUITABLE FOR REUSE BY OWNER OR OTHERS ON EXTENSIONS OF THE PROJECT OR ON ANY OTHER PROJECT. ANY REUSE WITHOUT WRITTEN VERIFICATION OR ADAPTATION BY REMINGTON & VERNICK ENGINEERS AND AFFILIATES FOR THE SPECIFIC PURPOSE INTENDED WILL BE AT OWNERS SOLE RISK AND WITHOUT LIABILITY OR LEGAL EXPOSURE TO REMINGTON & VERNICK ENGINEERS AND AFFILIATES, AND OWNER SHALL INDEMNIFY AND HOLD HARMLESS REMINGTON & VERNICK ENGINEERS AND AFFILIATES FROM ALL CLAIMS, DAMAGES, LOSSES AND EXPENSES ARISING OUT OF OR RESULTING THEREFROM.

ISSUED FOR BID	REVISION	DATE	BY	CHK
1		11/24/2025		

**LEGEND**  
 EAST NORRITON TOWNSHIP  
**STONY CREEK DRAINAGE IMPROVEMENTS**  
 PHASE 1  
 MONTGOMERY COUNTY  
 PENNSYLVANIA  
 EAST NORRITON TOWNSHIP

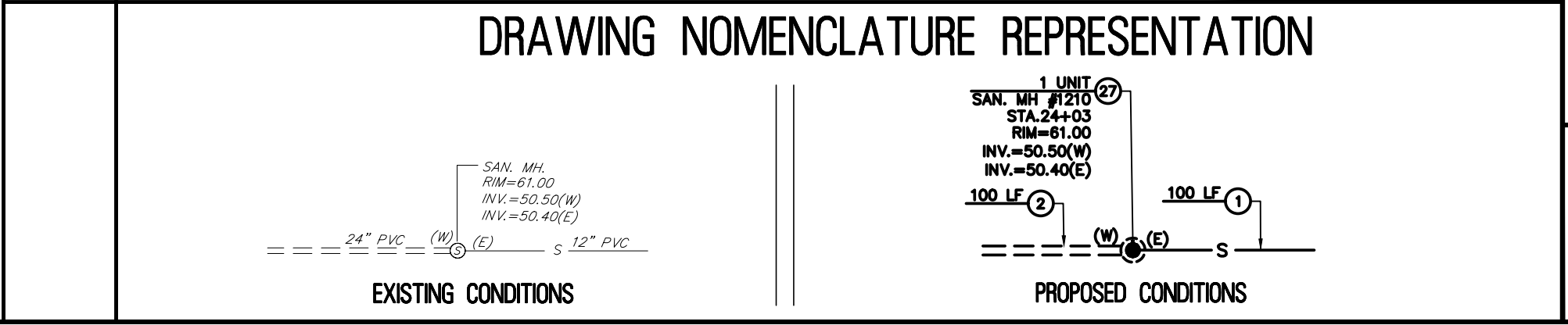
DATE	JOB No.	SHEET No.
12/12/2024	PMENT040	3 of 14

ITEM	DESCRIPTION	EXISTING	PROPOSED
	OVERHEAD WIRE		
	SANITARY FORCE MAIN PIPE		
	STORM SEWER PIPE ≤ 12"		
	STORM SEWER PIPE > 12"		
	GAS SERVICE		
	SANITARY SEWER PIPE ≤ 12"		
	SANITARY SEWER PIPE > 12"		
	ELECTRIC SERVICE		
	FIBER OPTIC SERVICE		
	TELEPHONE SERVICE		
	COMMUNICATIONS SERVICE		
	IRRIGATION PIPE		
	WATER SERVICE		
	WATER SHUT-OFF		
	WATER METER		
	WATER VALVE		
	WATER HYDRANT		
	WELL		
	YARD HYDRANT		
	METER PIT		
	GAS SHUT-OFF		
	GAS METER		
	GAS VALVE		
	GAS LINE MARKER		
	CLEANOUT		
	SEWER VENT		
	INLET TYPE M		
	INLET TYPE C		
	INLET TYPE DOUBLE M		
	AREA DRAIN		
	MANHOLES		
	HEADWALL		
	HEADWALL W/ WINGS		
	IRRIGATION CONTROL VALVE		
	IRRIGATION BOX		
	IRRIGATION CONTROL BOX		
	SPRINKLER HEAD		
	UNKNOWN VALVE		
	COMMUNICATIONS PEDESTAL		
	COMMUNICATIONS LINE MARKER		
	TELEPHONE PEDESTAL		
	TELEPHONE LINE MARKER		
	ELEC. BOX		
	ELEC. METER		
	ELEC. TRANSFORMER PAD		
	ELEC. VAULT		
	ELEC. LINE MARKER		
	UTILITY POLE		
	GUY ANCHOR		
	ELEC. OUTLET		
	LIGHTS		
	VENT		
	VENT PIPE		

ITEM	DESCRIPTION	EXISTING	PROPOSED
	BENCHMARK LOCATION		
	CROWS FOOT		
	AERIAL TARGET		
	CONCRETE MONUMENT		
	PK / MAG NAIL / DRILL HOLE / SPIKE		
	DRILL HOLE W/ WINGS		
	STAKE		
	HUB		
	PIN W/ CAP		
	IRON PIPE		
	IRON PIN		
	CROSS CUT		
	DISK		
	STONE		
	REBAR		
	BASELINE		
	CENTERLINE		
	EASEMENT		
	RIGHT-OF-WAY		
	PROPERTY BOUNDARY		
	ADJACENT PROPERTY BOUNDARY		
	RAILROAD TRACKS		
	STATE BOUNDARY		
	MUNICIPAL / COUNTY BOUNDARY		
	BORING LOCATION		
	MONITORING WELL LOCATION		
	TEST PIT LOCATION		
	FRESHWATER WETLAND FLAG		
	FRESHWATER WETLAND LINE		
	FRESHWATER WETLAND BUFFER		
	EDGE OF WATER		
	STREAM CENTERLINE		
	GRASS/SOD		
	DECIDUOUS TREE		
	SHRUBS / BUSH		
	EVERGREENS		
	STUMP		
	WOODS / TREE LINE		
	WIRE FENCE		
	SPLIT RAIL FENCE		
	WOOD / VINYL FENCE		
	CHAIN-LINK FENCE		
	TOP OF BANK / DITCH		
	BOTTOM OF BANK / DITCH		
	CONTOUR (MAJOR)		
	CONTOUR (MINOR)		
	FLOW LINE / SWALE		
	TIME OF CONCENTRATION		
	SPOT GRADE		
	ROADWAY GRADE		
	DRAINAGE FLOW		

ITEM	DESCRIPTION	EXISTING	PROPOSED
	EDGE OF PAVEMENT		
	CURB		
	PAVEMENT / CONC. / SIDEWALK		
	LIMIT OF EXCAVATION		
	GUIDE RAIL		
	BOLLARD		
	MAILBOX		
	SIGNS		
	FLAG POLE		
	BENCH		
	PILE		
	DETECTABLE WARNING SURFACE		
	TYPICAL STRIPING		
	ADA STRIPING		
	TRAFFIC CONTROL BOX		
	TRAFFIC LIGHT		
	DEPT. OF TRANSPORTATION MANHOLE		
	STATE HIGHWAY DEPARTMENT		
	RAILROAD CROSSING BEACON		
	CALL BOX		
	OIL FILL		
	UNDERGROUND STORAGE TANK LID		
	RISER PIPE		
	RAISED PAVEMENT MARKER		
	TYPICAL NORTH ARROW		

ABBREVIATIONS	DESCRIPTION	EXISTING	PROPOSED
APR	APRON	EL	ELEVATION
ASB	ASBESTOS CEMENT PIPE	EX	EXISTING
AFF	ABOVE FINISHED FLOOR	FFE	FINISH FLOOR ELEVATION
ASB	ASBESTOS	FT	FEET
AL	ALUMINUM	E.B.W.B., N.B.S.B.	EASTBOUND, WESTBOUND, NORTHBOUND, SOUTHBOUND
BL	BASELINE	GL	GUTTER LINE
BM	BENCHMARK	GR	GRATE
BIT.	BITUMINOUS	GALV.	GALVANIZED
BLDG.	BUILDING	HW	HEADWALL
BGS	BELOW GROUND SURFACE	HDPE	HIGH DENSITY POLYETHYLENE PIPE
CL	CENTERLINE	INV.	INVERT
GIP	CAST IRON PIPE	IP	IRON PIN
CONC.	CONCRETE	IN	INCHES
OMP	CORRUGATED METAL PIPE	JB	JUNCTION BOX
CULV.	CULVERT	LSA	LANDSCAPED AREA
CS	CARBON STEEL	LF	LINEAR FEET
CF	CUBIC FEET	LST	LANDSCAPE TIE
CY	CUBIC YARDS	LOM	LIMIT OF MILLING
CMU	CONCRETE MASONRY UNIT	LOP	LIMIT OF PAVING
D.C.	DEPRESSED CURB	MB	MAILBOX
DH	DRILL HOLE	MAX.	MAXIMUM
DIA.	DIAMETER	MIN.	MINIMUM
DIP	DUCTILE IRON PIPE	MH	MANHOLE
DWY	DRIVEWAY	NO.	NUMBER
DYL	DOUBLE YELLOW LINE	N.T.S.	NOT TO SCALE
		P	PIPE
		PERF.	PERFORATED
		PC	POINT OF CURVATURE
		PI	POINT OF INFLECTION
		PT	POINT OF TANGENCY
		PSI	POUNDS PER SQUARE INCH
		PVK	POLYVINYL CHLORIDE PIPE
		PVC	POLYVINYL CHLORIDE PIPE
		PVT	POINT OF VERTICAL TANGENCY
		R	RADIUS
		RCP	REINFORCED CONCRETE PIPE
		RMC	RIGID METALLIC CONDUIT
		R.O.W.	RIGHT OF WAY
		R.R.	RAILROAD
		RTE.	ROUTE
		SAN.	SANITARY
		SS	STAINLESS STEEL
		SHD	STATE HIGHWAY DEPARTMENT
		SHLD.	SHOULDER
		STY.	STORY
		STA.	STATION
		SWL	SINGLE WHITE LINE
		SYL	SINGLE YELLOW LINE
		TBA	TO BE ABANDONED
		TBR	TO BE REMOVED
		TC	TOP OF CURB
		TEL	TELEPHONE
		TEMP.	TEMPORARY
		TYP.	TYPICAL
		UD	UNDERDRAIN
		UP	UTILITY POLE
		V	VOLTS
		VAR.	VARIES
		VM	WATER METER



**UTILITIES**

**ENVIRONMENTAL**

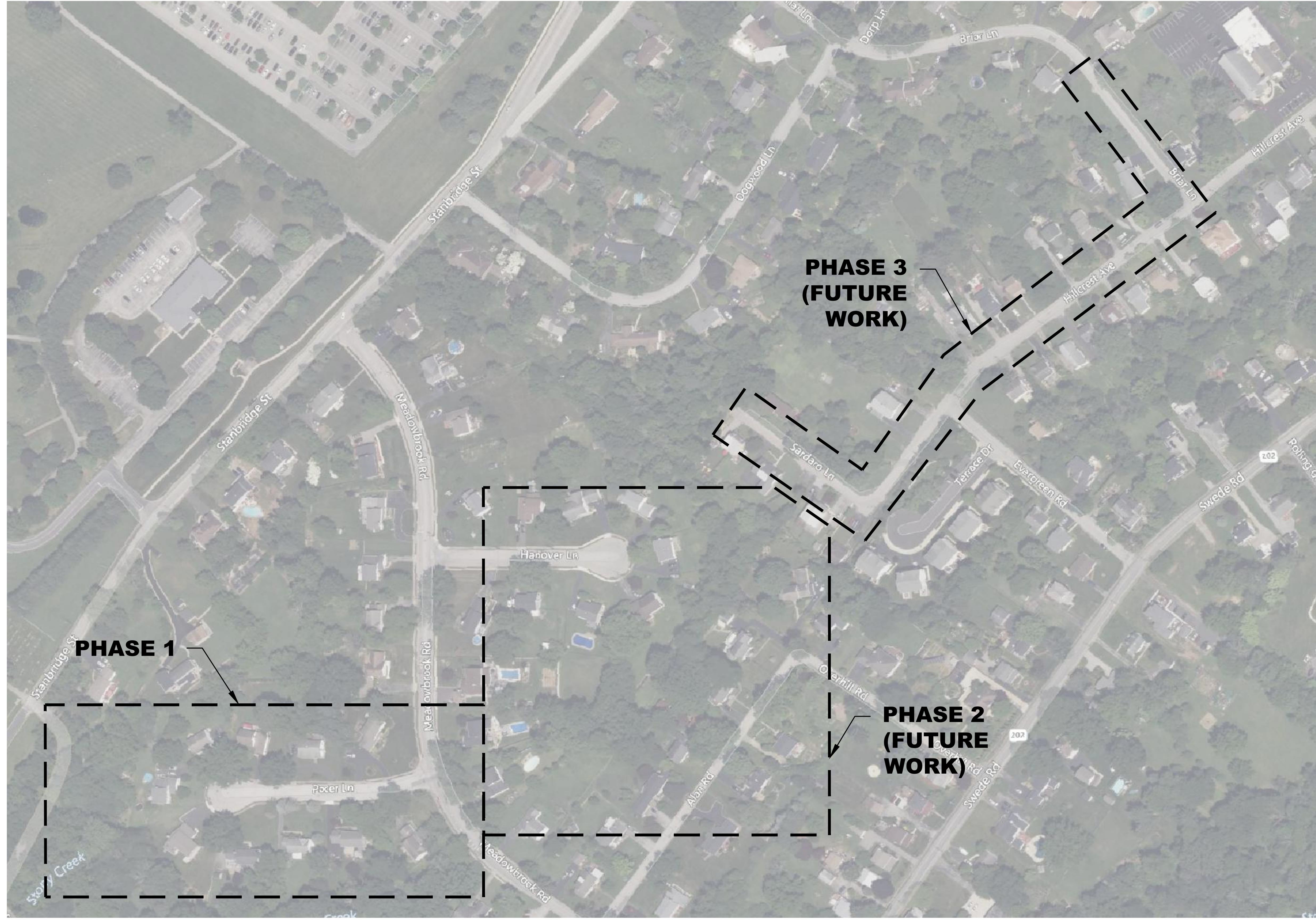
**LANDSCAPING**

**GRADING**

**ABBREVIATIONS**

**LEGEND**

**DRAWING NOMENCLATURE REPRESENTATION**

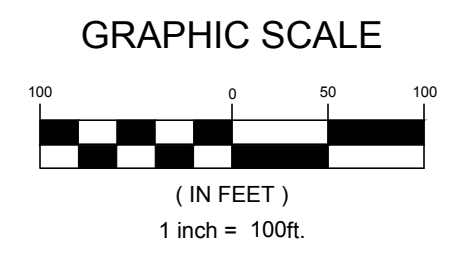


**PHASE 3  
(FUTURE  
WORK)**

**PHASE 1**

**PHASE 2  
(FUTURE  
WORK)**

**PLAN**  
SCALE: 1" = 100'



**REMINGTON & VERNICK ENGINEERS**  
Croton Road Corporate Center  
555 Croton Road, Suite 401  
King of Prussia, PA 19406  
(610) 940-1050, FAX (610) 940-1161  
WEB ADDRESS: RVE.COM  
*Excellence • Innovation • Service*

DATE: 11/24/2025  
**CHRISTOPHER J. FAZIO**  
PROFESSIONAL ENGINEER, No. PE0055339-E  
PENNSYLVANIA

ALL DOCUMENTS PREPARED BY REMINGTON & VERNICK ENGINEERS AND AFFILIATES ARE INSTRUMENTS OF SERVICE IN RESPECT OF THE PROJECT. THEY ARE NOT INTENDED OR REPRESENTED TO BE SUITABLE FOR REUSE BY OWNER OR OTHERS ON EXTENSIONS OF THE PROJECT OR ON ANY OTHER PROJECT. ANY REUSE WITHOUT WRITTEN VERIFICATION OR ADAPTATION BY REMINGTON & VERNICK ENGINEERS AND AFFILIATES FOR THE SPECIFIC PURPOSE INTENDED WILL BE AT OWNERS SOLE RISK AND WITHOUT LIABILITY OR LEGAL EXPOSURE TO REMINGTON & VERNICK ENGINEERS AND AFFILIATES. AND OWNER SHALL INDEMNIFY AND HOLD HARMLESS REMINGTON & VERNICK ENGINEERS AND AFFILIATES FROM ALL CLAIMS, DAMAGES, LOSSES AND EXPENSES ARISING OUT OF OR RESULTING THEREFROM.

ISSUED FOR BID	REVISION	DATE	BY
1		11/24/25	MW/DF

**PHASING PLAN**  
EAST NORRITON TOWNSHIP  
**STONY CREEK DRAINAGE IMPROVEMENTS**  
PHASE 1  
EAST NORRITON TOWNSHIP MONTGOMERY COUNTY PENNSYLVANIA

DRAWN BY:	DESIGN BY:	CHECKED BY:	SCALE:
MEW	PMF	CJF	AS NOTED
DATE:	SHEET No.:		
12/12/2024	4 of 14		
PROJECT NO. PMENT040			

ALL DOCUMENTS PREPARED BY REMINGTON & VERNICK ENGINEERS AND AFFILIATES ARE INSTRUMENTS OF SERVICE IN RESPECT OF THE PROJECT. THEY ARE NOT INTENDED OR REPRESENTED TO BE SUITABLE FOR REUSE BY OWNER OR OTHERS ON EXTENSIONS OF THE PROJECT OR ON ANY OTHER PROJECT. ANY REUSE WITHOUT WRITTEN VERIFICATION OR ADAPTATION BY REMINGTON & VERNICK ENGINEERS AND AFFILIATES FOR THE SPECIFIC PURPOSE INTENDED WILL BE AT OWNERS SOLE RISK AND WITHOUT LIABILITY OR LEGAL EXPOSURE TO REMINGTON & VERNICK ENGINEERS AND AFFILIATES, AND OWNER SHALL INDEMNIFY AND HOLD HARMLESS REMINGTON & VERNICK ENGINEERS AND AFFILIATES FROM ALL CLAIMS, DAMAGES, LOSSES AND EXPENSES ARISING OUT OF OR RESULTING THEREFROM.

NO.	REVISION	DATE	BY	CHK
2	ISSUED FOR BID	12/26/2025	MEW	PMF
1	BID ADDENDUM #3	12/22/2025	MEW	PMF

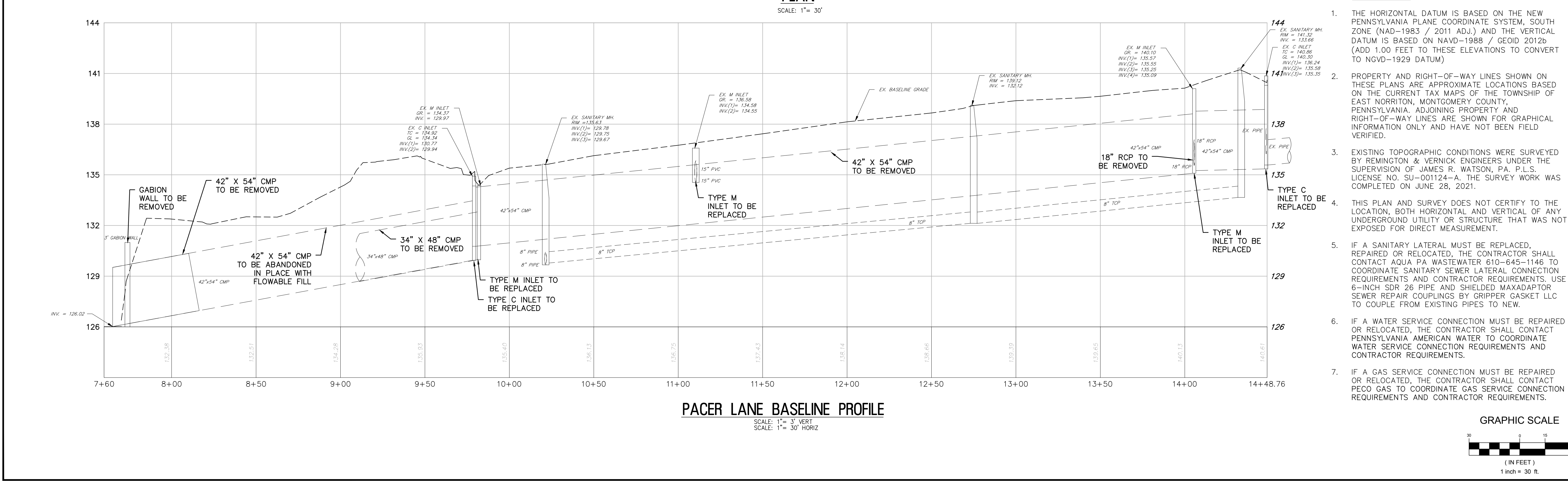
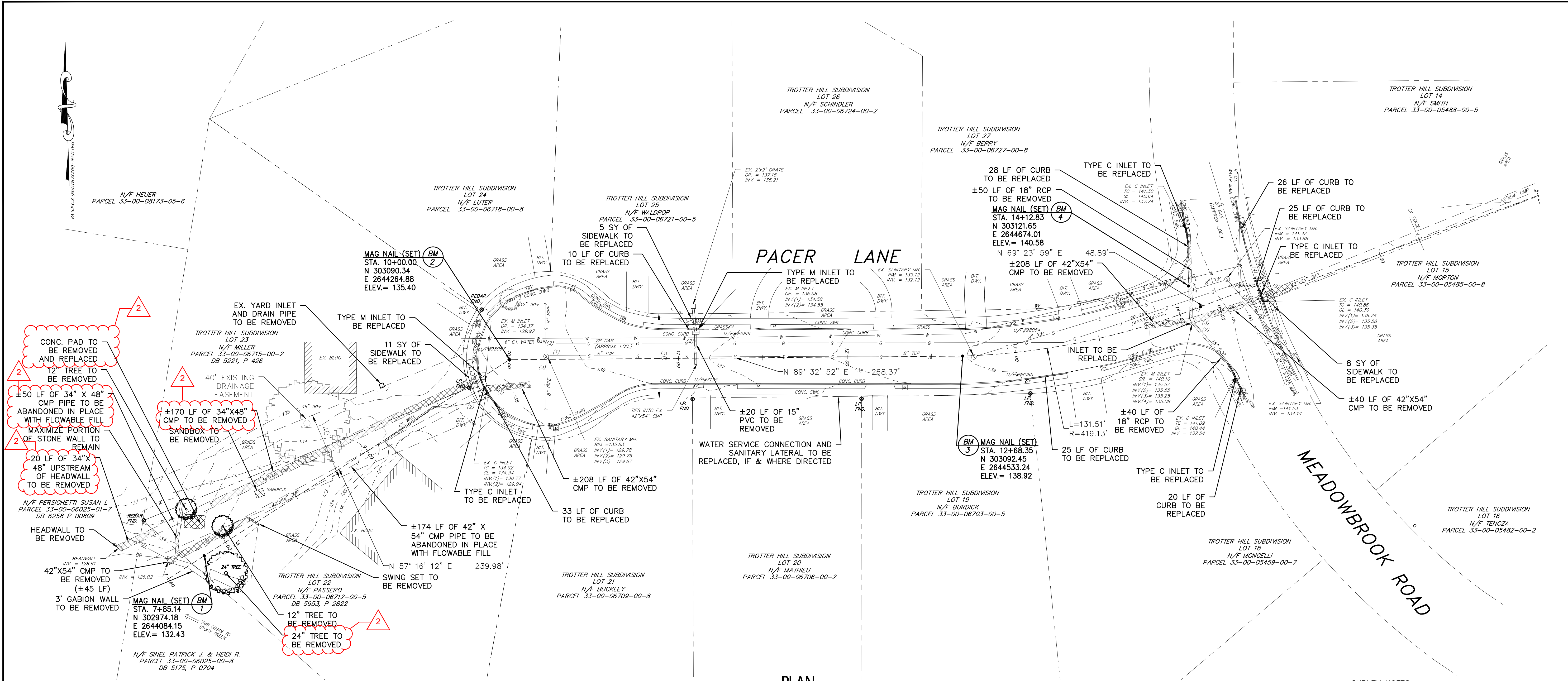
**EXISTING CONDITIONS & DEMOLITION PLAN**

EAST NORRITON TOWNSHIP  
MONTGOMERY COUNTY  
PENNSYLVANIA

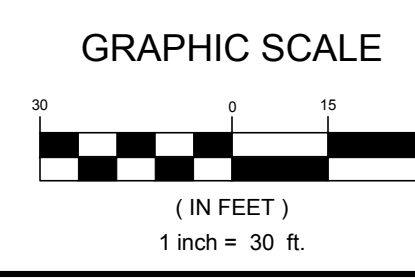
**STONY CREEK DRAINAGE IMPROVEMENTS**  
PHASE 1

DRAWN BY: MEW  
DESIGN BY: PMF  
CHECKED BY: CJF  
SCALE: AS NOTED

DATE: 12/12/2024  
JOB NO.: PMENT040  
SHEET NO.: 5 of 14

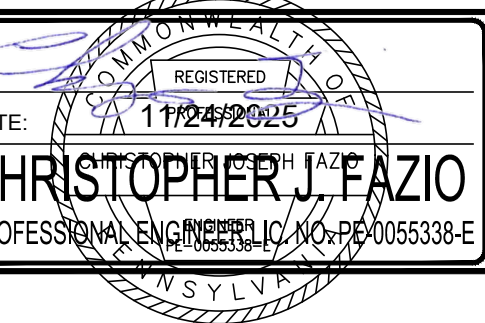


- SURVEY NOTES**
- THE HORIZONTAL DATUM IS BASED ON THE NEW PENNSYLVANIA PLANE COORDINATE SYSTEM, SOUTH ZONE (NAD-1983 / 2011 ADJ.) AND THE VERTICAL DATUM IS BASED ON NAVD-1988 / GEOID 2012b (ADD 1.00 FEET TO THESE ELEVATIONS TO CONVERT TO NGVD-1929 DATUM)
  - PROPERTY AND RIGHT-OF-WAY LINES SHOWN ON THESE PLANS ARE APPROXIMATE LOCATIONS BASED ON THE CURRENT TAX MAPS OF THE TOWNSHIP OF EAST NORRITON, MONTGOMERY COUNTY, PENNSYLVANIA. ADJOINING PROPERTY AND RIGHT-OF-WAY LINES ARE SHOWN FOR GRAPHICAL INFORMATION ONLY AND HAVE NOT BEEN FIELD VERIFIED.
  - EXISTING TOPOGRAPHIC CONDITIONS WERE SURVEYED BY REMINGTON & VERNICK ENGINEERS UNDER THE SUPERVISION OF JAMES R. WATSON, P.A. P.L.S. LICENSE NO. SU-001124-A. THE SURVEY WORK WAS COMPLETED ON JUNE 28, 2021.
  - THIS PLAN AND SURVEY DOES NOT CERTIFY TO THE LOCATION, BOTH HORIZONTAL AND VERTICAL OF ANY UNDERGROUND UTILITY OR STRUCTURE THAT WAS NOT EXPOSED FOR DIRECT MEASUREMENT.
  - IF A SANITARY LATERAL MUST BE REPLACED, REPAIRED OR RELOCATED, THE CONTRACTOR SHALL CONTACT AQUA PA WASTEWATER 610-645-1146 TO COORDINATE SANITARY SEWER LATERAL CONNECTION REQUIREMENTS AND CONTRACTOR REQUIREMENTS. USE 6-INCH SDR 26 PIPE AND SHIELDED MAXADAPTOR SEWER REPAIR COUPLINGS BY GRIPPER GASKET LLC TO COUPLE FROM EXISTING PIPES TO NEW.
  - IF A WATER SERVICE CONNECTION MUST BE REPAIRED OR RELOCATED, THE CONTRACTOR SHALL CONTACT PENNSYLVANIA AMERICAN WATER TO COORDINATE WATER SERVICE CONNECTION REQUIREMENTS AND CONTRACTOR REQUIREMENTS.
  - IF A GAS SERVICE CONNECTION MUST BE REPAIRED OR RELOCATED, THE CONTRACTOR SHALL CONTACT PECO GAS TO COORDINATE GAS SERVICE CONNECTION REQUIREMENTS AND CONTRACTOR REQUIREMENTS.





**REMINGTON & VERNICK ENGINEERS**  
 Croton Road Corporate Center  
 555 Croton Road, Suite 401  
 King of Prussia, PA 19406  
 (610) 940-1050, FAX (610) 940-1161  
 WEB ADDRESS: RVE.COM  
 Excellence • Innovation • Service

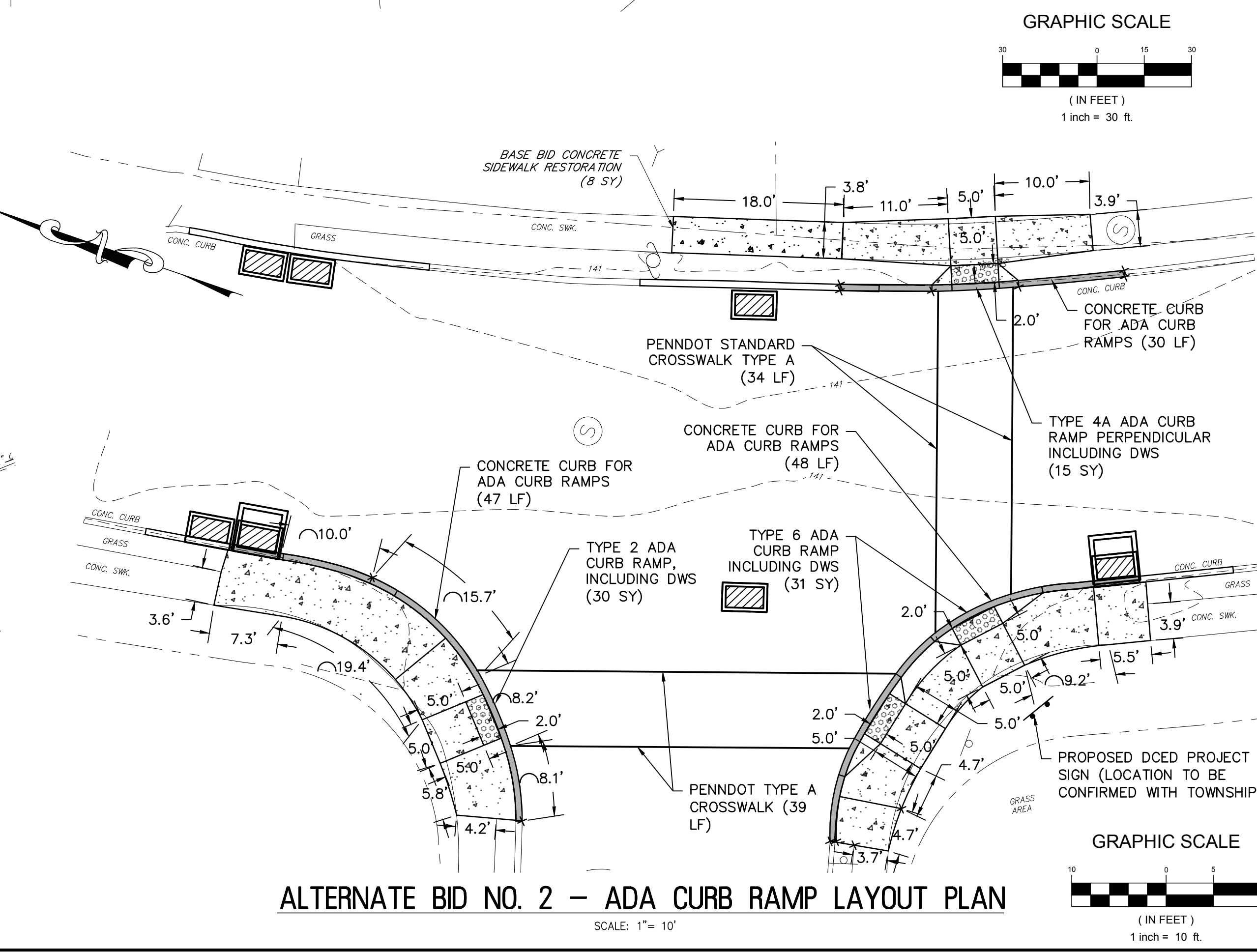
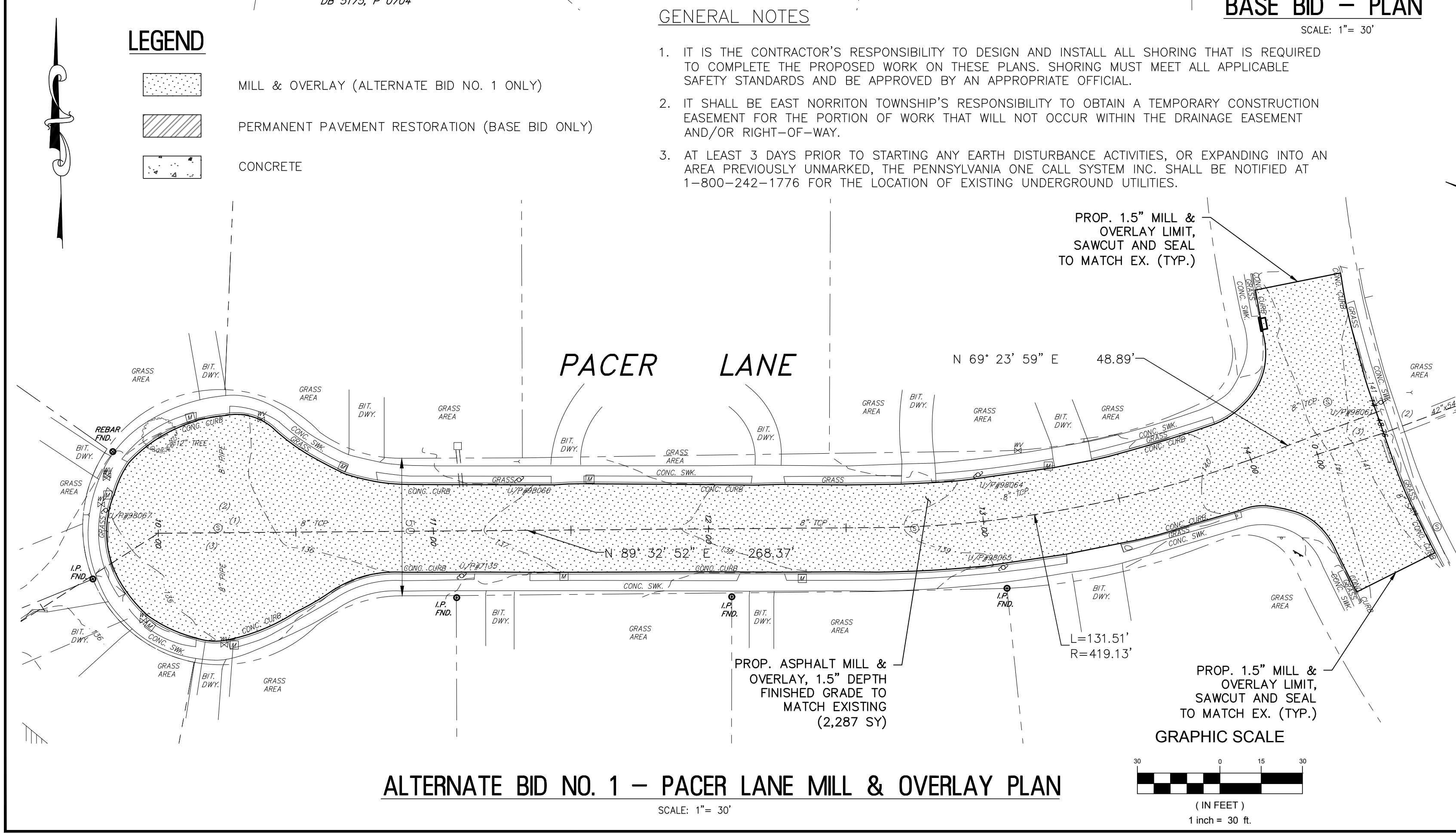
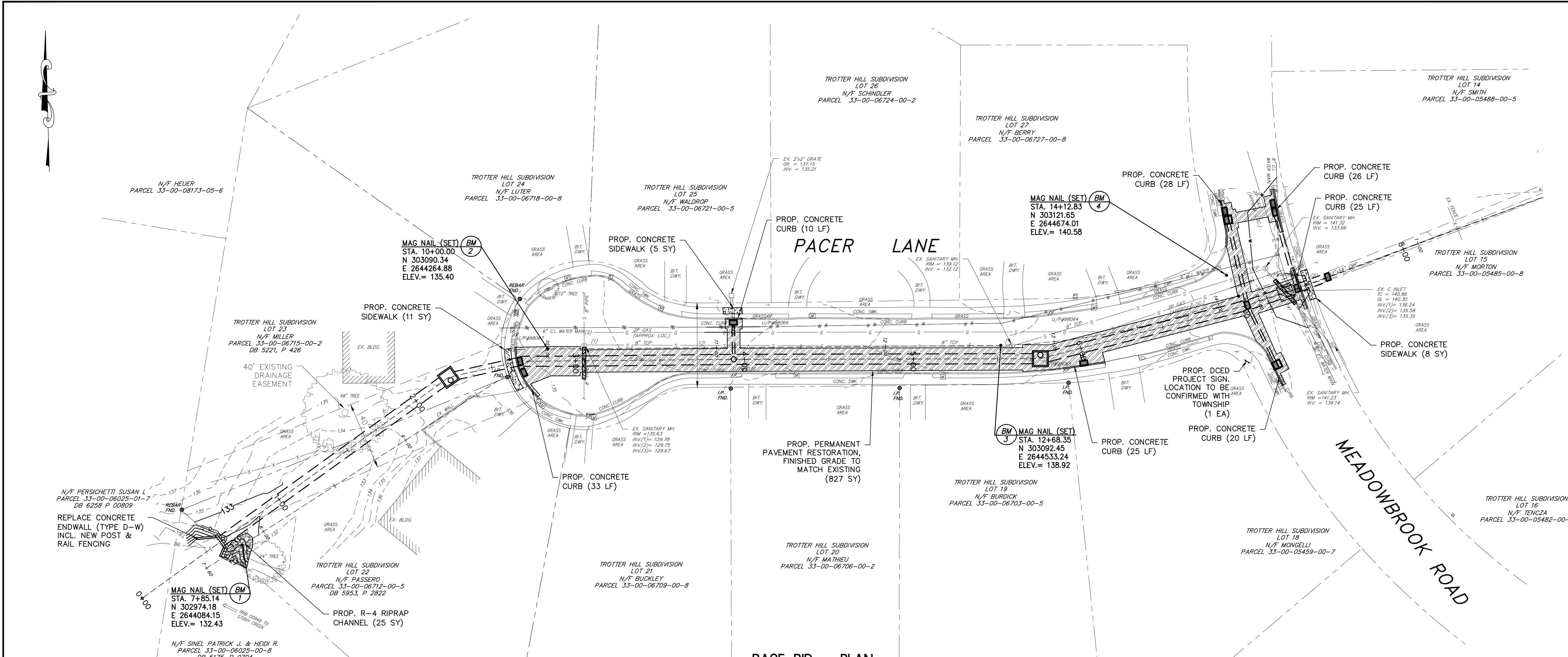


DATE: 11/24/2025  
 ALL DOCUMENTS PREPARED BY REMINGTON & VERNICK ENGINEERS AND AFFILIATES ARE INSTRUMENTS OF SERVICE IN RESPECT OF THE PROJECT. THEY ARE NOT INTENDED OR REPRESENTED TO BE SUITABLE FOR REUSE BY OWNER OR OTHERS ON EXTENSIONS OF THE PROJECT OR ON ANY OTHER PROJECT. ANY REUSE WITHOUT WRITTEN VERIFICATION OR ADAPTATION BY REMINGTON & VERNICK ENGINEERS AND AFFILIATES FOR THE SPECIFIC PURPOSE INTENDED WILL BE AT OWNERS SOLE RISK AND WITHOUT LIABILITY OR LEGAL EXPOSURE TO REMINGTON & VERNICK ENGINEERS AND AFFILIATES, AND OWNER SHALL INDEMNIFY AND HOLD HARMLESS REMINGTON & VERNICK ENGINEERS AND AFFILIATES FROM ALL CLAIMS, DAMAGES, LOSSES AND EXPENSES ARISING OUT OF OR RESULTING THEREFROM.

ISSUED FOR BID	REVISION	DATE	BY	CHK
1				

**SITE PLAN**  
 EAST NORRITON TOWNSHIP  
**STONY CREEK DRAINAGE IMPROVEMENTS**  
 PHASE 1  
 EAST NORRITON TOWNSHIP  
 MONTGOMERY COUNTY  
 PENNSYLVANIA

DRAWN BY	DESIGN BY	CHECKED BY	SCALE
MEW	PMF	CJF	AS NOTED
DATE:	12/12/2024		
JOB No.:	PMENT040		
SHEET No.:	6 of 14		



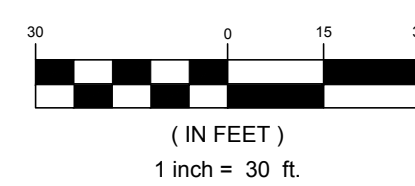
**LEGEND**

- MILL & OVERLAY (ALTERNATE BID NO. 1 ONLY)
- PERMANENT PAVEMENT RESTORATION (BASE BID ONLY)
- CONCRETE

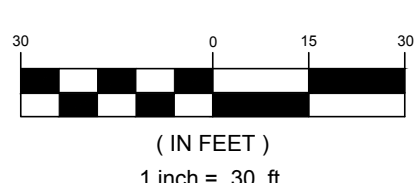
**GENERAL NOTES**

1. IT IS THE CONTRACTOR'S RESPONSIBILITY TO DESIGN AND INSTALL ALL SHORING THAT IS REQUIRED TO COMPLETE THE PROPOSED WORK ON THESE PLANS. SHORING MUST MEET ALL APPLICABLE SAFETY STANDARDS AND BE APPROVED BY AN APPROPRIATE OFFICIAL.
2. IT SHALL BE EAST NORRITON TOWNSHIP'S RESPONSIBILITY TO OBTAIN A TEMPORARY CONSTRUCTION EASEMENT FOR THE PORTION OF WORK THAT WILL NOT OCCUR WITHIN THE DRAINAGE EASEMENT AND/OR RIGHT-OF-WAY.
3. AT LEAST 3 DAYS PRIOR TO STARTING ANY EARTH DISTURBANCE ACTIVITIES, OR EXPANDING INTO AN AREA PREVIOUSLY UNMARKED, THE PENNSYLVANIA ONE CALL SYSTEM INC. SHALL BE NOTIFIED AT 1-800-242-1776 FOR THE LOCATION OF EXISTING UNDERGROUND UTILITIES.

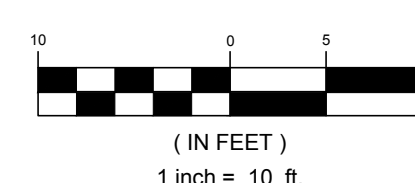
**GRAPHIC SCALE**



**GRAPHIC SCALE**



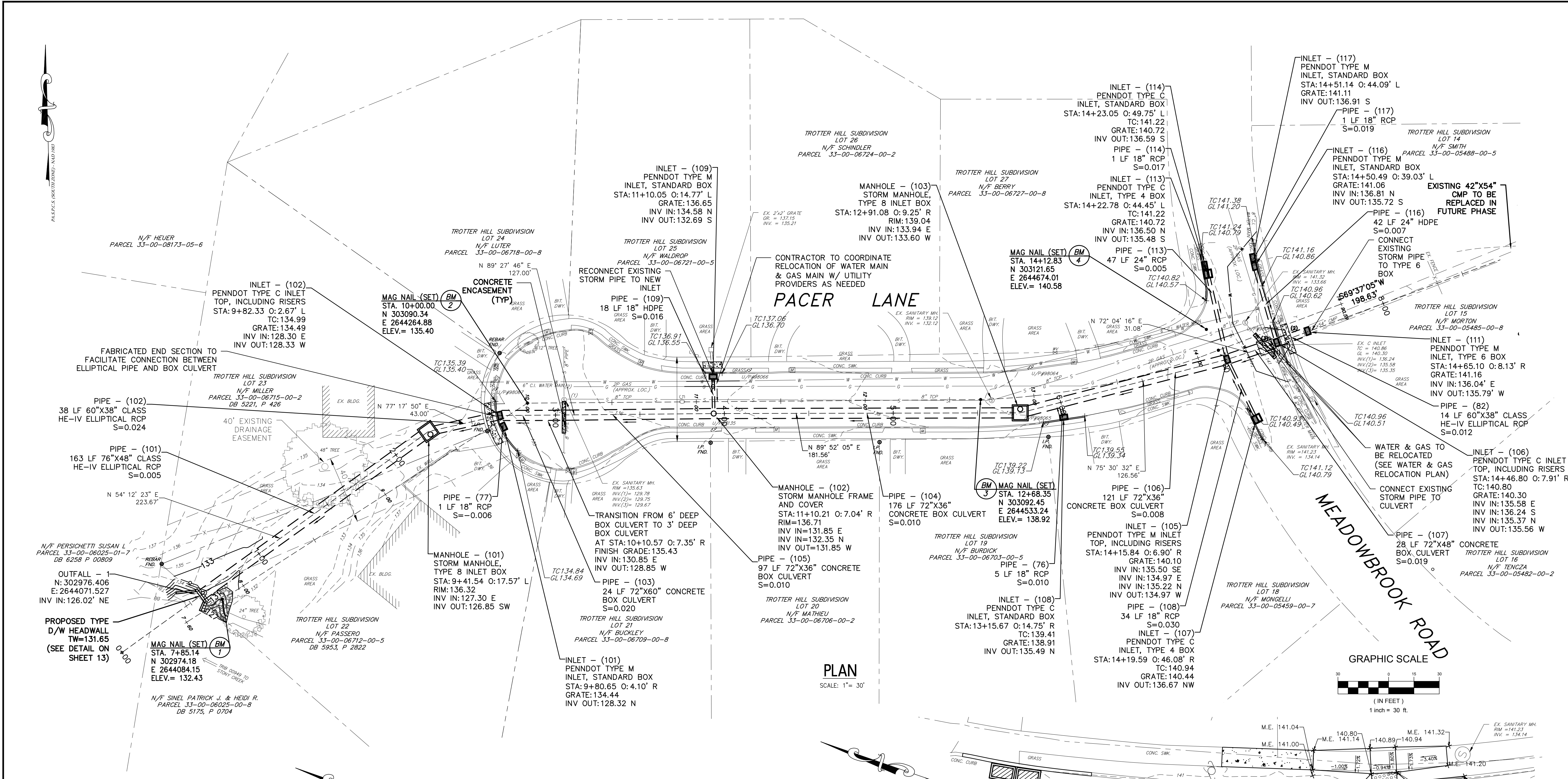
**GRAPHIC SCALE**



ALL DOCUMENTS PREPARED BY REMINGTON & VERNICK ENGINEERS AND AFFILIATES ARE INSTRUMENTS OF SERVICE IN RESPECT OF THE PROJECT. THEY ARE NOT INTENDED OR REPRESENTED TO BE SUITABLE FOR REUSE BY OWNER OR OTHERS ON EXTENSIONS OF THE PROJECT OR ON ANY OTHER PROJECT. ANY REUSE WITHOUT WRITTEN VERIFICATION OR ADAPTATION BY REMINGTON & VERNICK ENGINEERS AND AFFILIATES FOR THE SPECIFIC PURPOSE INTENDED WILL BE AT OWNERS SOLE RISK AND WITHOUT LIABILITY OR LEGAL EXPOSURE TO REMINGTON & VERNICK ENGINEERS AND AFFILIATES, AND OWNER SHALL INDEMNIFY AND HOLD HARMLESS REMINGTON & VERNICK ENGINEERS AND AFFILIATES FROM ALL CLAIMS, DAMAGES, LOSSES AND EXPENSES ARISING OUT OF OR RESULTING THEREFROM.

ISSUED FOR BID	REVISION	DATE	BY	CHK
1		11/24/25	MM/DF	

**GRADING AND DRAINAGE PLAN**  
EAST NORRITON TOWNSHIP  
**STONY CREEK DRAINAGE IMPROVEMENTS**  
PHASE 1  
MONTGOMERY COUNTY  
PENNSYLVANIA  
EAST NORRITON TOWNSHIP



**CONSTRUCTION BASELINE NOTE:**

- ALL STATION AND OFFSET MEASUREMENTS GIVEN FROM PACER LANE CONSTRUCTION BASELINE AS DEFINED BY BEARINGS, DISTANCES & BENCHMARKS ON EXISTING CONDITIONS PLAN.
- BEARINGS AND DISTANCES ON THIS PLAN DENOTE CENTERLINE OF PROPOSED PIPE FOR THE STORM SEWER PROFILE SHOWN ON SHEET 8 OF THIS PLAN SET.

**GENERAL NOTES**

- IT IS THE CONTRACTOR'S RESPONSIBILITY TO DESIGN AND INSTALL ALL SHORING THAT IS REQUIRED TO COMPLETE THE PROPOSED WORK ON THESE PLANS. SHORING MUST MEET ALL APPLICABLE SAFETY STANDARDS AND BE APPROVED BY AN APPROPRIATE OFFICIAL.
- IT SHALL BE EAST NORRITON TOWNSHIP'S RESPONSIBILITY TO OBTAIN A TEMPORARY CONSTRUCTION EASEMENT FOR THE PORTION OF WORK THAT WILL NOT OCCUR WITHIN THE DRAINAGE EASEMENT AND/OR RIGHT-OF-WAY.
- AT LEAST 3 DAYS PRIOR TO STARTING ANY EARTH DISTURBANCE ACTIVITIES, OR EXPANDING INTO AN AREA PREVIOUSLY UNMARKED, THE PENNSYLVANIA ONE CALL SYSTEM INC. SHALL BE NOTIFIED AT 1-800-242-1776 FOR THE LOCATION OF EXISTING UNDERGROUND UTILITIES.
- CONTRACTOR SHALL CONFIRM INVERTS OF ALL UTILITY CONNECTIONS AND CROSSINGS AND SUBMIT TO ENGINEER.
- ALL STRUCTURES, INCLUDING BOX CULVERT AND FABRICATED END SECTIONS TO FACILITATE CONNECTION BETWEEN BOX CULVERT AND ELLIPTICAL PIPES, SHALL BE SUBMITTED TO ENGINEER FOR APPROVAL PRIOR TO MANUFACTURING.
- IF A LATERAL MUST BE REPLACED, REPAIRED OR RELOCATED, THE CONTRACTOR SHALL CONTACT FRED GERLOFF AT AQUA PA WASTEWATER 610-645-1146. ASSUMING WE ARE OK WITH YOUR CONTRACTOR, WE WILL WANT TO COME OUT TO INSPECT THE WORK THAT IS BEING DONE TO THE LATERAL TO ENSURE IT MEETS OUR STANDARDS. USE 6-INCH SDR 26 PIPE AND SHIELDED MAXADAPTOR SEWER REPAIR COUPLINGS BY GRIPPER GASKET LLC TO COUPLE FROM EXISTING PIPES TO NEW.
- AT THE END OF THE WORKING DAY ALL TRENCHES MUST BE BACKFILLED OR PLATED TO ENSURE ACCESS TO PRIVATE PROPERTIES AT ALL TIMES.

